

Research in Progress London

Thursday 7 December 2023

Resource for London, 356 Holloway Road,
London, N7 6PA, UK



RSTMH
DEDICATED TO GLOBAL HEALTH SINCE 1907

Table of Contents

About RSTMH.....	3
RSTMH Research in Progress.....	4
Feedback	4
Programme	5
Poster Presentations.....	7
Biographies	8
Speakers	8
Abstract Presenters.....	10
Poster Presenters.....	12
Notes	15

About RSTMH

The Royal Society of Tropical Medicine and Hygiene (RSTMH) is a charity and membership society which has been dedicated to improving tropical medicine and global health since 1907. With our global network of members and Fellows, we work to improve access and equity in health, especially for those in low-resource settings.

We fund and showcase the research and delivery of global health and tropical medicine through our grants programme and peer-reviewed journals. Our global events grow knowledge, fostering innovation and collaboration. Through our activities we enhance the skills and networks of our members and Fellows.

Our expertise and the learnings from our work address the biggest challenges in tropical medicine and global health through awareness, research, funding, and advocacy. Our members, based in 95 countries, are at all stages of their careers, working across a multitude of disciplines and from a range of sectors.

Become a member

Support our work and be part of a community that helps to save lives and improve health around the world. Member benefits include:

- Access to our Early Career Grants programme that supports early career researchers
- Access to our Member's Area, including our Member's Directory for networking
- A 10% discount on open access fees for our journals *International Health* and *Transactions*
- Access to our Student Ambassador programmes.
- Discounted rate to our meetings and events
- A fortnightly newsletter that contains exclusive news and opportunities for our members

For a 15% discount off the price of your membership, email eva.mclean@rsmth.org and quote the code **RSTMHDECRI23** (valid until 31st Jan 2024)

If you want to know more, please come and chat to any of the RSTMH team or email us nisreen.hamad@rsmth.org

For full information on membership and more, please visit www.rsmth.org/membership

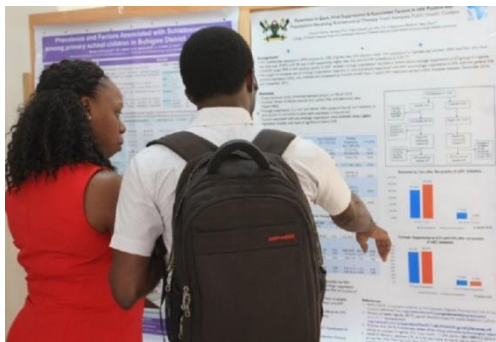
RSTMH Research in Progress

Our Research in Progress London event is designed specifically for early career investigators to present their unpublished research in progress to peers and senior experts in all fields of tropical medicine and global health.

This is a fantastic opportunity to network with other early career researchers, and senior professionals, working in tropical medicine and global health. As in previous years, the meeting will be comprised of 10 oral abstract presentations and 14 poster presentations, all delivered by early career researchers. We also have two keynote speakers, **Dr Chiara Lepora**, Director of the Manson Unit, MSF UK, who will be speaking healthcare research and humanitarian interventions, and **Professor Joanne Webster**, Chair in Parasitic Diseases and Director of the Centre for Emerging, Endemic and Exotic Diseases (CEEED), Royal Veterinary College, who will be speaking on One Health and the World Health Organization neglected tropical diseases (NTD) 2023 targets.

Attendees will have the opportunity to take part in a **networking session** as well as **guidance sessions** throughout the afternoon on the topics of funding, publishing, and communicating your work.

We are also pleased to announce that a small group of senior experts will be reviewing the posters and oral presentations throughout the day, with a certificate and prize being awarded to winning presenters of each respectively.



Feedback



Share your feedback today!

We want to make RSTMH meetings and events the best they can be, so please do share your feedback on today's event. Use the QR code, or go to <https://www.surveymonkey.com/r/KPISRPP> to take the survey on today's Research in Progress London meeting and tell us what you would like to see from future RSTMH meetings and events.

Programme

09:00 Arrival and registration

09:15 Welcome

Tamar Ghosh, Chief Executive, *Royal Society of Tropical Medicine and Hygiene (RSTMH)*

Professor Jimmy Whitworth, President, *RSTMH*

09:20 Chair: **Professor Jimmy Whitworth**, President, *RSTMH*

Healthcare research and humanitarian interventions

Dr Chiara Lepora, Director of the Manson Unit, *MSF UK*

10:05 Session 1 Presentations

Chair: Nisreen Hamad, Membership Manager, *RSTMH*

The Eco-Bio-Social e-Delphi Study (EBS_eDS): Developing an eco-bio-social framework for dengue virus transmission in Latin America and the Caribbean

Aisha Barkhad, *McMaster University*

10:20 Unsuppressed viraemia and lower CD4 count are associated with shorter telomere length in perinatally HIV-infected children from Zambia and Zimbabwe

Julian Shellard, *University of Oxford*

10:35 Cholera in South-Central Somalia: Geographical distribution and risk factors for disease severity

Dr Faduma Abdi, *London School of Hygiene and Tropical Medicine (LSHTM)*

10:50 Speed Networking

11:25 Morning break and poster viewing

11:45 Session 2 Presentations

Chair: Tom Pinfield, Managing Editor, *RSTMH*

Association between Female Genital Schistosomiasis and High-Risk Human Papillomavirus: Baseline Analysis of a Longitudinal Cohort Study Amongst Zambian Women

Lola Flomen, *LSHTM*

12:00 A secondary analysis of the clinical, diagnostic and serogroup characteristics of human leptospirosis in Manila, the Philippines, 2015-2023

Dr Ryan McCorkell, *Nagasaki University*

12:15 Development and Optimisation of a Novel qPCR Assay for the Detection of Benzimidazole Resistance Associated Single Nucleotide Polymorphisms in Cambodian Hookworm Populations

Isabel Cooper, *Liverpool School of Tropical Medicine (LSTM)*

12:30 Poster Presentations

This will consist of all 14 poster presenters giving a 2-minute summary of their poster – Please see the full list of these in the section below the programme.

Please do approach the presenters in breaks and lunch to ask questions and learn more!

13:00 Lunch and poster viewing

14:00 Session 3 Presentations

Chair: Professor David Mabey, Professor of Communicable Diseases, *LSHTM*

Evaluating the Prevalence of HIV Drug Resistance Mutations in the VITALITY Cohort of Children on cART from Zambia and Zimbabwe: A Pilot Study

Emma Mao, *University of Oxford*

14:15 Programmatic considerations for chikungunya vaccine introduction in countries at risk of chikungunya outbreaks: stakeholder analysis

Megan Auzenberg, *LSHTM*

14:30 A Protocol to Shed Light on Noma in Mozambique After Decades of Neglect

Marta Ribes, *ISGlobal*

14:45 Children born HIV-free exhibit differences in cognition, cardiovascular fitness and growth in rural Zimbabwe

Joseph Piper, *LSHTM*

15:00 Afternoon break and poster viewing

15:20 Guidance Sessions

Please choose one to attend:

- **How to get published**
Dr Stefanie Meredith, Editor-in-Chief of *International Health*
Tom Pinfield, Managing Editor, *RSTMH*
- **How to communicate your research**
Dr Elli Wright, Public Engagement Manager, *LSTM*
Clare Bebb, Head of Corporate Communications, *LSTM*
- **How to get funding**
Dr John Horton, Independent Consultant

15:50 Guidance Sessions

Please choose one to attend:

- **How to get published**
Dr Stefanie Meredith, Editor-in-Chief of *International Health*
Tom Pinfield, Managing Editor, *RSTMH*
- **How to communicate your research**
Dr Elli Wright, Public Engagement Manager, *LSTM*
Clare Bebb, Head of Corporate Communications, *LSTM*
- **How to get funding**
Professor Sarah Rowland-Jones, Professor of Immunology, *University of Oxford*

16:20 **Chair: Dr Judy MacArthur Clark**, Executive Director, *JMC Welfare International*

One Health and the World Health Organization neglected tropical diseases 2023 targets

Professor Joanne Webster, Chair in Parasitic Diseases and Director of the Centre for Emerging, Endemic and Exotic Diseases, *Royal Veterinary College*

17:05 Prize giving and wrap up

Tamar Ghosh, Chief Executive, *RSTMH*

17:15 Close

Poster Presentations

- P.01** Sensitivity of Kato-Katz, miracidial hatching and point-of-care circulating cathodic antigen test for *Schistosoma mansoni* in Lake Albert, Uganda
Dr Kelsilandia Aguiar Martins, *Royal Veterinary College*
-
- P.02** Modes of transmission and clinical course of human Mpox in Lagos, Nigeria
Dr Olufolakemi Cole, *Lagos State University Teaching Hospital*
-
- P.03** Targeted laboratory methods for the improved surveillance of ESBL-producing *E. coli*
Sarah Gallichan, *Liverpool School of Tropical Medicine (LSTM)*
-
- P.04** The Behavioural and Sublethal Impact of Insecticide Treated Net Exposure on Different Mosquito Knockdown Resistant Transgenic Lines
Gemma Harvey, *LSTM*
-
- P.05** Characterising MyoF and MyoJ – unique unconventional myosin motors within the malaria parasite *Plasmodium falciparum*
Alex Holmes, *Cambridge Institute for Medical Research*
Philip Ilani, *University of Cambridge*
-
- P.06** Integrating community malaria worker programs into primary healthcare to promote their sustainability: a Thailand case study
Monnaphat Jongdeepaisal, *Mahidol Oxford Tropical Medicine Research Unit*
-
- P.07** Population prevalence of *Helicobacter pylori* and serologically diagnosed gastric atrophy in Zambia
Violet Kayamba, *University of Zambia*
-
- P.08** The Benefits of Global Genomic Analysis of Sporadic Salmonellosis - A case study with *Salmonella* Cotham associated with infants
Clare Maguire, *UK Health Security Agency*
-
- P.09** Case Series of Snake Envenomation and its Complications in a Third-Level Hospital in Panama City between 1999-2022
Monica Pachar, *LSHTM*
-
- P.10** In Vitro testing of Milk derived exosomes as a novel therapeutic strategy against *Trypanosoma brucei*
Rushiil Ravichandran, *Technological University Dublin*
-
- P.11** A case of suspected mercury pneumonitis in a small scale gold mine worker
Tom Spears, *LSHTM*
-
- P.12** Women's experiences and engagement with a disease management intervention for podoconiosis in Rwanda
Corinna Thellmann, *Brighton and Sussex Medical School*
-
- P.13** The role of cattle and other ruminants in the epidemiology of human schistosomiasis
Lennon Turner, *LSTM*

Biographies

Speakers

Clare Bebb



Clare Bebb is currently Head of Corporate Communications at the Liverpool School of Tropical Medicine. She has been at LSTM for 10 years now, but in the world of communications and PR for just under 30, with media relations, crisis communications and reputational management specialist areas. She is passionate about good science communication, and, as a non-scientist herself, feels that she can translate work well for a lay audience. Clare is a member of the STEMPRA – a network of science PR and communications professionals, and currently sits as a non-portfolio member of the committee, working to provide events, networking opportunities and training to members throughout the UK.

Dr John Horton



Dr John Horton is a medical practitioner with over 35 years of experience in tropical medicine, including malaria, helminths, leishmaniasis, diarrhoeal diseases, and TB. He was the moving force behind the tropical disease initiatives at GlaxoSmithKline (GSK) and helped establish the Medicines for Malaria Venture and the Global Alliance for TB Drug Development. As an industry member of the WHO/IFPMA working party, he was instrumental in the elevation of 'Neglected Diseases' into the public arena, and of GSK in Public Private Partnerships with the WHO to develop drugs for tropical diseases and affordable access to modern pharmaceutical products in public health.

Dr Horton has been an Honorary RSTMH Fellow since 2003 and was Vice President during the Society's Centenary celebrations (2005-2007). He also served as a Trustee on the RSTMH Board between 2013 - 2016. Although retired, Dr Horton continues to support public health programmes and new drug development as a consultant to the WHO and to drug development consortia.

Dr Chiara Lepora



Dr Chiara Lepora is the Director of the Manson Unit in MSF UK, and the Deputy Medical Director in MSF OCA (Operational Centre Amsterdam). Trained as a medical practitioner at the Universities of Pavia and Lisbon, Dr. Lepora holds post-graduate master and diploma from LSHTM (UK), a post-doctoral fellowship in Bioethics from NIH (USA), and an MBA from the INSEAD Business School (Singapore, Abu Dhabi, Fontainebleau).

Since 2002, Dr. Lepora conducted and coordinated several missions with Médecins Sans Frontières (Angola, DRC, Sudan, Liberia, Somalia, Tchad, Cameroun, Philippines, and South Sudan), and with the International Committee of the Red Cross (Israel and Palestine, Morocco, Italy, Belgium, Kyrgyzstan, and Algeria.)

They taught Global Health and Humanitarian Affairs at the Josef Korbel School of International Studies of the University of Denver for a year before returning to MSF, opening and managing the MSF Dubai decentralized desk for Yemen, Iraq and Jordan between 2011 and 2015.

Chiara Lepora conducted research on ethics in crisis contexts, with a particular focus on complicity. Drawing on both research and experience, Dr. Lepora co-authored with Professor Robert E. Goodin the book *On Complicity and Compromise* (Oxford University Press, 2013) and with Prof. Collin O'Neil and Sean Aas the book *50 Puzzles, Problem Cases, and Thought Experiments in Bioethics* (Routledge, forthcoming).

Dr Stefanie Meredith



Dr Stefanie Meredith has over 30 years' experience in policy and advocacy on public health and international development, with a focus on tropical public health interventions in Africa. Her work has involved ensuring technical excellence and managing complex, large scale programs at country, regional and global level. She has a long-time interest and experience in research on vector borne and Neglected Tropical Diseases and management of disease control programmes. In her roles as Mectizan Donation Programme Director and "Tackling Visceral Leishmaniasis in South Asia and east Africa" the public and private sector experience included facilitating between major partners, building coalitions and leveraging resources which have given me an understanding of the complementary roles and responsibilities that each sector can play in addressing health outcomes.

Working as an independent consultant has broadened Stefanie's experience and interest to include, amongst others, reproductive health issues, access to medicine, R&D for new treatments & diagnostics for diseases of the developing world and gender issues.

Dr Stefanie Meredith was appointed Editor in Chief of International Health in April 2022.

Tom Pinfield



Tom Pinfield joined the RSTMH as Managing Editor in November 2022. Tom has many years' experience working in academic publishing. Prior to joining the RSTMH, he was the Assistant Editor for Journal of Applied Ecology, a journal owned by the British Ecological Society, and before this, was an Editorial Officer at the British Society for Rheumatology. At the RSTMH, he is responsible for the overall management and strategic development of the Society's two journals, Transactions of the Royal Society of Tropical Medicine & Hygiene and International Health. In his role, he works closely with authors, editors and reviewers to ensure a fair and timely review process and collaborates with colleagues from OUP to ensure the journals remain competitive within the wider publishing landscape. He also assists with the promotion of the research published in our journals and works to ensure that the journals contribute to the wider RSTMH strategy.

Professor Sarah Rowland-Jones



Professor Sarah Rowland-Jones trained in medicine at Cambridge and Oxford and then embarked on post-graduate training in adult infectious diseases in London and Oxford. She became interested in HIV infection through looking after some of the first patients in the UK with AIDS as a junior doctor in London, and began her research career in Oxford as an MRC Clinical Training Fellow, studying the cellular immune response to HIV infection.

Over the course of subsequent MRC fellowships (as a Clinician Scientist and then as a Senior Fellow), Sarah became increasingly concerned about the problems being caused by HIV in

Africa. In particular, the group studied immune responses to HIV in highly exposed but apparently uninfected people, most notably sex workers in The Gambia and Kenya, and more recently in infants exposed to HIV from infected mothers, in an effort to understand protective immunity to HIV. Between 2001 and 2004, she was the Director of the Oxford Centre for Tropical Medicine, which coordinates Oxford-linked research activities in tropical medicine and international health, particularly in Wellcome Trust funded research units in Thailand, Vietnam and Kenya. In 2004, she moved to The Gambia as Director of Research in the MRC Laboratories in The Gambia, the UK's oldest and largest research unit, where she was based until August 2008.

She is now back in Oxford as a Professor of Immunology and her research group continues to focus on immune responses to HIV infection in African cohorts, trying to identify what would be needed to create a successful vaccine.

Professor Joanne Webster



Professor Joanne P. Webster is the Royal Veterinary College's Chair in Parasitic Diseases, Director of the Centre for Emerging, Endemic and Exotic Diseases (CEEED), Associate Director of the London Centre for Neglected Tropical Disease Research (LCNTDR), and Professor of Infectious Diseases at Imperial College London's Faculty of Medicine.

After gaining a double First-class BSc honours, Joanne's Doctoral (DPhil) research at the University of Oxford focused on the epidemiology of zoonotic disease within the UK, including initiating novel work on the impact of *Toxoplasma gondii* on host behaviour and its association

with chronic disease across both humans and animals. After a year working as a Clinical Scientist at the NHS Communicable Disease Surveillance Centre (CDSC), specialising in congenital syphilis amongst babies born in the UK, Joanne returned to the University of Oxford as a postdoctoral Fellow, EPA Cephalosporin Junior Research Fellow (JRF), Lecturer in Infectious Diseases and as a Royal Society University Research Fellow (URF). During this period, Joanne expanded the scope of her work to encompass global health and tropical field research and disease control across much of Africa and Asia. Joanne accepted a Readership at Imperial College's Faculty of Medicine in 2003 and was promoted to a tenured Professorial Chair in Infectious Diseases in 2006. The key motivation for this move was the unique opportunity to be co-Director of the then newly formed Schistosomiasis Control Initiative (SCI). In October 2014, Joanne joined the RVC to further expand her One Health research and disease control activities encompassing both human clinical and animal veterinary tropical medicine.

Joanne's research and disease control activities have been awarded a number of high-profile prizes, medals and recognitions, including, but not exclusive to, the CA Wright Medal for Outstanding Contribution to Parasitology (2005) and Chalmers Memorial Medal to recognise Outstanding Contribution to Tropical Medicine (2013).

Dr Elli Wright



Dr Elli Wright has been working as Public Engagement Manager at Liverpool School of Tropical Medicine (LSTM) for 8 years following a post-doctoral research career in microbiology. She has recently completed an MSc. in Science Communication at the University of the West of England, where her dissertation was centred on the use of autoethnography as an approach to evaluate the co-creation of a touring pop-up museum between scientists, artists, and the custodians of LSTM's archives. The pop-up museum is called the Tropical Medicine Time Machine, which transports an audience through LSTM's history to its present-day work. The Tropical Medicine Time Machine has been developed to celebrate LSTM's 125th anniversary year and has been funded by The National Lottery Heritage Fund.

Abstract Presenters

Faduma Abdi



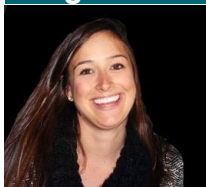
Faduma Abdi is a Medical Doctor and Epidemiologist recently graduated from London school of hygiene and tropical medicine. Prior to her MSc, she used to work for the World Health Organization Somalia and Yemen as public health emergency officer and surveillance officer. She specialized in emergency preparedness and response. She is interested in particularly infectious diseases and health emergencies related to climate crisis in complex conflict and humanitarian settings. Her expertise involved in combination of quantitative public health measurement and disease control in crisis (armed conflict, natural disaster, epidemic) settings including outbreaks investigation and intervention, infectious diseases surveillance, polio eradication efforts, community survey design and analysis, operational research, capacity building and managing field epidemiology.

Abigail Allen



Abigail Allen is a 5th year medical student at Newcastle University. As part of her intercalated Global Health Masters by Medical Research degree, she completed a 3-month research project in the Kilimanjaro region of Tanzania. This project re-assessed a longitudinal cohort of HIV-positive people aged 50-years-old or more for HIV-associated Neurocognitive Disorder (HAND), which is becoming increasingly prevalent as improved anti-retroviral access has resulted in the HIV-positive population in Tanzania ageing rapidly. Her dissertation focused on assessing the value of reduced performance in different cognitive domains during neuropsychological testing in 2019, at predicting a deterioration in functional ability by 2023. This project hopes to contribute to a new screening tool to identify those at risk of more severe HAND in older East-African HIV-positive populations.

Megan Auzenberg



Megan Auzenberg is a Research Fellow and PhD student at LSHTM. She has worked at LSHTM in vaccination modelling since 2018, exploring the impact and efficiencies of different vaccination strategies for measles and polio. In 2022, Megan began working on vaccination policy criteria and stakeholder considerations for rolling out the newly licensed Chikungunya vaccine. Her work comprises mixed-methods research and is concerned with evaluating different vaccination strategies in high-burden areas, specifically the trade-offs between preventative and reactive vaccination campaigns.

Aisha Barkhad



Aisha Barkhad is a Ph.D. candidate in Interdisciplinary Global Health at McMaster University in Hamilton, Canada. She holds a BSc. degree in Biochemistry, Microbiology and Immunology, and a MSc. degree in Epidemiology and Public Health, both obtained from the University of Ottawa, Canada. With her knowledge about host-pathogen interactions at a molecular level, and the transmission of vector-borne infectious diseases at the population level, Aisha's research projects focus on investigating and compiling the evidence for the ecological, biological, and social determinants of dengue virus epidemiology in Latin America and the Caribbean. Aisha's work is funded by Canada's International Development Research Centre (IDRC) and contributes to the growing body of literature on the effects of climate change on infectious disease emergence and re-emergence in low- and middle-income settings.

Isabel Cooper



Isabel Cooper is a recent MSc graduate from the Liverpool School of Tropical Medicine, who is currently continuing her dissertation work as a Research Assistant at the same institution. Her work is focussed on developing detection methods for drug resistance in hookworm populations, in the context of benzimidazole-resistance associated single nucleotide polymorphisms (SNPs) in the β -tubulin isotype-1 gene of *Necator americanus* collected from Cambodia. Her research in Liverpool is primarily laboratory-based but involves some bioinformatics, primer design and statistics. Prior to her master's degree, Isabel studied Bioveterinary Science at the University of Liverpool, and worked as a Parasitologist for the Animal and Plant Health Agency.

Lola Flomen



Lola Flomen is a Scientific Writer and Research Consultant for Population Services International (PSI). She recently completed her Master's in Control of Infectious Diseases at LSHTM. Lola has four years of experience in sexual and reproductive health programmes exchanging research skills with her colleagues in Kisumu, Kenya, and Abidjan, Côte d'Ivoire. Lola Flomen is most passionate about researching community-driven integrated infectious disease prevention interventions. She has publications on client preferences for a novel dual PrEP/Contraception implant in South Africa and adaptations to prevent unsafe abortion during the COVID-19 pandemic in Bolivia, Nepal, Mali, and Palestine.

Emma Mao



Emma Mao is a 3rd year undergraduate student studying medicine at the University of Oxford. Over the last summer, she undertook a project with Sarah Rowland-Jones' lab where she investigated the prevalence of HIV drug resistance mutations in a cohort of children from Zambia and Zimbabwe. This was done to try and understand why some children had unsuppressed viraemia despite long term combination antiretroviral therapy. Emma's research involves viral extraction, sequencing, and bioinformatic analysis techniques.

Ryan McCorkell



Ryan McCorkell is a PhD candidate at the school of Tropical Medicine and Global Health, Nagasaki University. He plans to investigate the pathogenesis of leptospirosis through analysis of Leptospiral diversity and the host immune response. In particular, he hopes to establish a model that explains the spectrum of clinical manifestations seen in leptospirosis, including hepatic and renal failure and pulmonary haemorrhage. In September 2022 he graduated from the Master of Tropical Medicine programme at Nagasaki University, and prior to that worked for two years as a medical doctor in the UK.

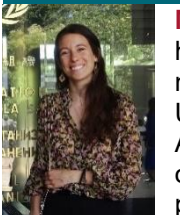
Joseph Piper



Joe Piper is a UK Paediatrician (ST5 registrar) and Wellcome Trust Fellow particularly interested in child growth and function. He has worked in Kenya (KEMRI) on severe malnutrition and is finishing a Wellcome Trust Fellowship examining School-age outcomes from the SHINE cluster randomised trial in Zimbabwe.

He has investigated school-age measures of growth, body composition, physical and cognitive function. These provide an insight into long-term effects of interventions and area also highly predictive for adulthood. He also works on the long-term effects of HIV exposure, environmental, maternal and nurturing influences. He works part-time in the NHS on Community Paediatrics, neonatal and general paediatrics, as well as at London School of Hygiene and Tropical Medicine in the Nutrition department.

Marta Ribes



Marta Ribes is a pre-doctoral researcher at the Barcelona Institute for Global Health. She holds a bachelor's in Biomedical Sciences from the University of Barcelona (2014-2018), a master's in Neuroscience from Sorbonne Université (2018-2019) and in Global Health from the University of Barcelona (2019-2020).

As part of her PhD she has participated in several COVID-19 studies, ranging from the study of its immune response, through the factors influencing its epidemiology, to the drafting of public health policy recommendations.

She now combines her work on COVID-19 with her advocacy and research efforts to raise awareness about noma. Her objective is to bring to light cases occurring in Mozambique which, due to its neglect and poverty of those affected, never reach the health reports or the scientific community.

Julian Shellard



Julian Shellard is a third year medical student at the University of Oxford. While studying to qualify as a doctor, he has been involved in HIV research in Professor Sarah Rowland-Jones' immunology group at the Nuffield Department of Medicine. His recent laboratory work has been centred on using telomere length as a biomarker of immune ageing in perinatally infected children with HIV from sub-Saharan Africa. This work is part of the wider VITALITY clinical trial, and these results were first presented at the Unblinding Meeting in Zimbabwe at the end of November.

Poster Presenters

Kelsilandia Aguiar Martins



Kelsilandia has a PhD in Parasitology and experience working both in human and veterinary parasitology. At the moment, she is a Postdoctoral Research Assistant in Parasite Population Genetics at the Royal Veterinary College, where she is a member of the FibroScHot consortium. The primary goal of this consortium is to understand the impact of more frequent praziquantel administration on school children in hotspot areas such as the shores of Lake Albert, Uganda.

Olufolakemi Cole



Dr Olufolakemi Cole-Adeife is a consultant physician, dermatologist, and venereologist at the Department of Medicine of the Lagos State University Teaching Hospital in Lagos, Nigeria. She is an active clinical researcher, working on various areas of research in dermatology and public health, including albinism, atopic dermatitis, seborrhoeic dermatitis, psoriasis, skin-related neglected tropical diseases and mpox. She is also a skin health advocate on several social media platforms.

She is currently a student at the London School of Hygiene and Tropical Medicine, taking the Postgraduate Diploma in Tropical Medicine and Hygiene course.

Sarah Gallichan



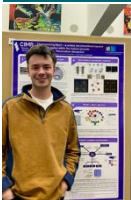
Sarah Gallichan is a PhD student at the Liverpool School of Tropical Medicine, where she is researching the better methods for the surveillance of ESBL-producing *E. coli*. Her research involves working towards understanding how laboratory processes bias the detection of ESBL-producing *E. coli* in complex microbial samples to provide more accurate data for the modelling of transmission. Her work has informed laboratory practices for the TRACS (Tracking AMR Across Care Settings) study that is currently taking place in healthcare settings around the Liverpool area. Sarah is particularly interested in the gut microbiome and the transmission of gastrointestinal pathogens. Prior to her PhD, Sarah completed an undergraduate in Genetics at the University of Pretoria and went on to pursue a Master of Science in Medicine with a focus in Clinical Microbiology and Infectious Disease at the University of Witwatersrand in South Africa. She also worked for two years in the biotechnology industry conducting routine sequencing for human genetic diagnostics in the South African healthcare sector.

Gemma Harvey



Gemma Harvey is a Research Technician and recently completed a MSc in Tropical Disease Biology at the Liverpool School of Tropical Medicine (LSTM) where she was interested in insecticide resistance in malarial mosquito vectors. Her work has involved investigating the impact of exposure to insecticide treated nets on mosquito behaviour and the effect of sublethal exposure on mosquito life traits using transgenic insecticide resistant mosquito strains. This has led to her current role within the Department of Vector Biology and Liverpool Insect Testing Establishment at LSTM where she is continuing research in mosquito behaviour at the net interface. Prior to this, Gemma studied Biomedical Science at the University of Warwick and worked 13-months in diagnostics and research laboratories conducting pathogen detection and drug resistance screening.

Alex Holmes



Alex Holmes is currently a final year PhD student at the Cambridge Institute for Medical Research (University of Cambridge). His work focuses on characterising one of *P.falciparum*'s six myosin motors - the essential, unconventional and unique Myosin F, which could present a new anti-malarial drug target. Alex studies Myosin F across a range of scales, from the tiny (Expansion Microscopy and cellular assays) to the even tinier (Single motor biophysics and CryoEM). His project has focused on generating the tools and assays needed to study Myosin F

whilst discovering many novel features along the way. Aside from the real science he is also very interested in science policy and communication so do reach out to chat with Alex!

Philip Ilani



Philip Ilani is a research assistant at the Cambridge Institute for Medical Research, University of Cambridge, where he is researching myosin motor functions in the malaria parasite. His research involves recombinant protein engineering, high-throughput screening and using other in vitro and in vivo techniques including CRISPR-Cas9 system to validate the druggability of malaria parasite proteins. Currently, Philip is interested in deciphering the role of myosin motor proteins in malaria parasite growth and development and targeting them with small molecule inhibitors for the development of next-generation antimalarials. Philip also worked at the West African Centre for Cell Biology of Infectious Pathogens, University of Ghana, where he obtained his master's degree and is keen on pursuing a PhD.

Monnaphat Jongdeepaisal



Monnaphat is currently a DPhil student at the University of Oxford and a social scientist based at Mahidol-Oxford Tropical Medicine Research Unit (MORU) in Bangkok, Thailand. Her projects focus on minimising malaria risk among forest goers, sustaining village malaria volunteer programs in the Greater Mekong Subregion, and landscaping primary care and health policy in Thailand. In these projects, she conducts in-depth interviews, focus groups, community surveys, stakeholder analysis, and public engagement to assess the feasibility and acceptability of community-based health interventions that may lead to better access to malaria and broader care among forest goers. Prior to her DPhil, she studied Public Policy at the National University of Singapore, and worked in policy research for two years.

Violet Kayamba



Dr Violet Kayamba is a senior lecturer in Gastroenterology and Internal Medicine at the University of Zambia School of Medicine and a researcher within the Topical Gastroenterology and Nutrition group. She is a founding fellow of the East, Central, and Southern African College of Physicians, and current president of the Zambia College of Gastroenterology and Nutrition. She is a member of the American Association for Cancer Research, the World Endoscopy Organisation, the African Organization for Research and Training in Cancer, the African Forum for Research and Education in Health, the Consortium of Universities for Global Health and the Organization for Women in Science for the Developing World. Dr. Kayamba's main research interest is in gastrointestinal malignancies.

Clare Maguire



Clare Maguire is a Senior Biomedical Scientist for the Salmonella Reference Service at the Gastrointestinal Bacteria Reference Unit (GBRU), UKHSA, Colindale. She is studying part-time for a PhD on 'Genomic approaches for assessing the risk of Salmonella infection in vulnerable populations' for understanding what types of vulnerable populations are affected, clonal populations associated with these groups and detection of any specific virulence or anti-microbial resistance these strains have that maybe driving selection pressure. The analysis for the PhD will be carried out on genomic data generated by GBRU from Salmonella isolates referred from clinical laboratories for surveillance across England and Wales. Clare's job involves supporting the running the Salmonella Reference Unit, which includes supervising the laboratory work, validating reports and supporting outbreak investigations.

Anne Nduta Miatu



Anne Nduta Miatu is pursuing MSc. Epidemiology and Biostatistics at Jomo Kenyatta University of Agriculture and Technology in Kenya as a beneficiary of the European and Developing Countries Clinical Trials Partnership Fellowship Program. She has conducted a research on prevention of malaria in pregnancy at Busia County in Kenya. The focus of the study was on intermittent preventive treatment using sulphadoxine pyrimethamine (IPTP-SP). The research was a facility based cross sectional study that aimed to determine the prevalence of uptake of three or more doses of IPTP-SP as recommended by the World Health Organization and the associated individual and health system factors. She has an interest in infectious diseases research. She holds a Bachelor of Science in Nursing and Public Health and has previously worked with the Kenya Medical Research Institute, the National Ministry of Health Kenya and as a clinical nurse. Currently, she is working for the Kenya Medical Training College as a nursing educator.

Monica Pachar



Monica Pachar is currently a Masters student in Tropical Medicine and International Health at the London School of Hygiene and Tropical Medicine, as well as a Chevening Scholar, 2023-2024. She is also a physician and clinical researcher at Hospital Santo Tomas and Instituto Oncologico Nacional in Panama. She previously studied as a Medical Doctor at Universidad Latina de Panama, as well as completing her Masters in Clinical Science, with emphasis in Internal Medicine from University of Panama, and her Doctor in Clinical Science, in Infectious Diseases from University of Panama. Her research interests include tropical diseases in migrants, snakebite, NTDS, emerging infectious diseases, and wilderness medicine.

Rushiil Ravichandran



Rushiil Ravichandran is a dedicated PhD student at Technological University Dublin, Ireland, specializing in microbiology. Rushiil's current focus is on innovating high-throughput quantification methods for bacterial infections in vitro. A significant part of his work involves developing therapeutic strategies derived from egg white proteins and milk derived exosomes to combat pathogens with a particular emphasis on addressing the challenges posed by biofilms. His interest extends to understanding and tackling antimicrobial resistance, aiming to pioneer modern therapeutic strategies in this field. Rushiil holds a Master's degree in Healthcare Infection Management from Trinity College Dublin, Ireland. His academic journey is further enriched by his project experiences at Umea University, Sweden. Through his research, Rushiil is committed to making significant contributions to the field of microbiology and infection management.

Tom Spears



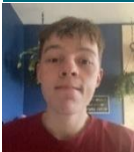
Tom Spears is currently an MSc TMIH student at the London School of Hygiene and Tropical Medicine. He has returned recently from 3 years of working clinically as a doctor in Chad. He is interested in the interaction between barriers to accessible healthcare and delayed presentation, particularly relating to Malaria. He previously trained and worked as a GP in Southampton.

Corinna Thellmann



Corinna Thellmann is a PhD student at Brighton and Sussex Medical School, where she is focusing on podoconiosis, a Neglected Tropical Disease, from a social science perspective. Her research is centred on women's lived experience and engagement with a disease management intervention for podoconiosis in Rwanda. She conducted her fieldwork in the Northern Province of Rwanda using qualitative research methods. Corinna is particularly interested in how intersectionality and structural violence affect illness experience and health seeking in relation to Neglected Tropical Diseases. Prior to her PhD, she studied Social and Cultural Anthropology at the Ludwig Maximilian University of Munich and the Eberhard Karl University of Tübingen, as well as Global Health at Maastricht University.

Lennon Turner



Lennon Turner has recently finished his master's degree in Tropical Disease Biology at the Liverpool School of Tropical Medicine. His dissertation was focused on the role of cattle in the transmission of human schistosomiasis through hybridisation events, this project was completed within Mangochi, Malawi. His research involved the filtration of cattle faecal, collection of schistosome miracidia and the genotyping of samples through qPCR and melt-peak analysis.

Lennon is particularly interested in the impact of zoonotic disease in poor and low-income communities within tropical regions. Prior to this master's degree, he studied biological and medical sciences at the university of Liverpool.

Notes

Notes